

NOBLELIFT



A series 2.0/2.5/3.0/3.5/3.8T
IC counterbalanced forklift

NEW / *Noblelift Products*
ARRIVAL

NOBLELIFT INTELLIGENT EQUIPMENT CO., LTD.

A series 2.0-3.8T IC counterbalanced forklift

The A series is an internal combustion counterbalance forklift independently developed by Noblelift using advanced technology. By configuring a China Stage IV emission engine and optimizing the transmission and hydraulic system matching, the entire vehicle operates more environmentally friendly and with lower energy consumption.

Performance

- The ground clearance of the entire vehicle has been increased, improving its passability. The fuel tank capacity has been enlarged to meet the requirements of continuous operation for two shifts.
- The mast has been widened and the three-stage mast piping has been optimized, providing better visibility.
- The lift cylinder diameter for the 3.5T-3.8T models has been increased, the chains have been enlarged, and the distance between the fork carriage rollers has been widened, reducing the mast failure rate.
- The hydraulic system matching has been optimized, resulting in faster mast lifting and lowering speeds, thereby improving work efficiency.
- The shifting and inching controls have been optimized, making the operation smoother.

Appearance

- A brand-new exterior design with a streamlined good looking shape.
- The overall appearance of the vehicle is simple, compact in size, and robust in appearance.
- All exposed components are made of metal, ensuring durability and reliability.

Safety

- The adoption of a long wheelbase design enhances the longitudinal stability of the vehicle, significantly improving load-bearing capacity under the same lifting height.
- Reducing the rear axle load extends the lifespan of the steering tires.
- The rear pillars of the overhead guard have been enlarged to ensure driver safety.
- Wide-view mast with descent buffer to reduce impact.

Comfort

- Ergonomic design increases legroom and headroom for the driver, enhances visibility for operation, and improves comfort with a smaller diameter steering wheel.
- Enlarge the boarding step and handrail to make getting on and off the vehicle more convenient.
- The front undercarriage is designed as a one-piece unit, which can be opened without tools, enhancing the convenience for daily maintenance and repairs.
- The streamlined integral hood reduces noise.

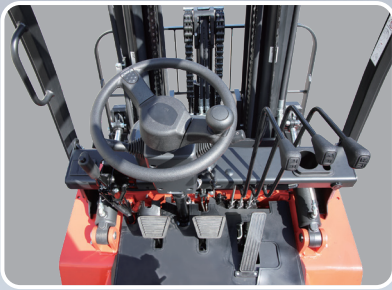
Reliability

- The engine intake pipe uses a high-mounted independent intake, effectively preventing dust from entering.
- A high-flow air filter reduces intake resistance and extends engine life.
- The aluminum tube-fin radiator and optimized counterweight cooling duct enhance overall vehicle cooling capability, ensuring reliable operation of the engine and transmission.
- The cast steering axle uses tapered roller bearings for the kingpin, enhancing reliability.
- The hydraulic piping layout is optimized, and the pipe joints use 24-degree cone seals to reduce hydraulic leakage.

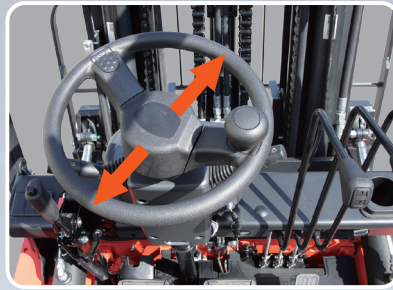
Engine Configuration

Engine Model	Xinchai 4D29V41	Xinchai 4D32V41	Xinchai 4D29V41	Xinchai C490BPG	Xinchai 3E22YG51	Xinchai 4D29X41	Xinchai 4G24LPG	Quanchai V29-50V42	ISUZU C240NKFC	Mitsubishi S4S
Engine Description	493VP Pump (Chinese stage IV Emission standards)	498VP Pump (Chinese stage IV Emission standards)	493VP Pump (Chinese stage IV Emission standards)	493VP Pump (Chinese stage II Emission standards)	(Euro V)	493 common rail (Chinese stage IV Emission standards)	(Euro V)	493VP Pump (Chinese stage IV Emission standards)	(Euro IIIA)	(Euro IIIA)
Engine Code	X1	X2	X3	X4	X5	X6	X7	Q1	W1	S1
Power Type	Diesel	Diesel	Diesel	Diesel	Diesel	Diesel	LPG	Diesel	Diesel	Diesel
Power (Kw/RPM)	36.8/2500	36.8/2500	34/2500	35.3/2500	44.8/2400	36.8/2500	45/2500	36.8/2500	34.6/2500	35.4/2250
Torque (N·m/rpm)	165/1600-1800	186/1600-1800	140/1600-1800	162/1800-2000	210/1600-1800	175/1600-1800	185/1500-1800	170/1800	139/1800	170/1700
Displacement (L)	2.85	3.17	2.85	2.67	2.23	2.85	2.378	2.85	2.369	3.33
Suitable Load Capacity (Tons)	2.0-3.8t	2.0-3.8t	1.5-1.8t	2.0-3.8t	2.0-3.8t	2.0-3.8t	2.0-3.8t	2.0-3.8t	2.0-3.5t	2.0-3.8t





Advanced ergonomics significantly improve operational comfort.



A smaller diameter steering wheel is used to reduce operator fatigue.



The engine intake pipe uses a high-mounted independent intake, effectively preventing dust from entering.



Increase the leg and headroom for the driver, and enhance visibility for operation.



The widened mast provides a better field of vision.



The engine hood opens at an 80-degree angle.





Equipped with led lightning.



Easy maintenance.



Automotive-style fuel filler cap.



Enlarge the boarding step.



Useful cup and pen holder.



Identification	1.1	Manufacture(abbreviation)		NOBLELIFT	NOBLELIFT	
	1.2	Manufacturer's type designation		CPC(D)20-AX1	CPC(D)25-AX1	
	1.3	Drive:electric(battery or mains),diesel,petrol gas>manual)		Diesel	Diesel	
	1.4	Type of operation(hand,pedestrian,standing,seated,order-picker)		Seated	Seated	
	1.5	Load capacity/rated load	Q(kg)	2000	2500	
	1.6	Load centre distance	c (mm)	500	500	
	1.8	Load distance,centre of drive axle to fork	x (mm)	465	465	
	1.9	wheelbase	y (mm)	1660	1660	
	Weights	2.1	Service weight incl	kg	3500	3800
2.2		Axle loading ,laden front/rear	kg	4870/630	5600/730	
2.3		Axle loading,unladen front/rear	kg	1600/1900	1600/2200	
Wheels, Chassis	3.1	Type:solid rubber,superelastic,pneumatic,polyurethane		Pneumatic tire	Pneumatic tire	
	3.2	Tyres size,front		7.00-12-12PR	7.00-12-12PR	
	3.3	Tyres size,rear		6.00-9-10PR	6.00-9-10PR	
	3.5	Wheels,number front/rear(×=driven wheels)		2X/2	2X/2	
	3.6	Track width,front	b10 (mm)	973	973	
	3.7	Track width,rear	b11 (mm)	980	980	
	Basic Dimensions	4.1	Mast/fork carriage tilt forward/backward	$\alpha/\beta(^{\circ})$	6/12	6/12
4.2		lowered mast height	h1(mm)	1995	1995	
4.3		Free lift	h2(mm)	140	140	
4.4		Lift height	h3(mm)	3000	3000	
4.4a		Lift height (Including cargo fork)	h23(mm)	3040	3040	
4.5		Extended mast height	h4(mm)	4025	4025	
4.7		Overhead load guardheight	h6(mm)	2130	2130	
4.8		Seat height/standing height	h7(mm)	1030	1030	
4.12		Coupling height	h10(mm)	400	400	
4.19		Overall length (Including cargo fork)	l1(mm)	3698	3698	
4.20		Overall length	l2(mm)	2628	2628	
4.21		Overall width (Frame/tires)	b1(mm)	1150/1163	1150/1163	
4.22		Fork dimensions	s/e/l(mm)	1070/120/40	1070/120/40	
4.23		Fork mounting grade		3A	3A	
4.24		Width of fork rack	b3(mm)	1040	1040	
4.31		Ground clearance ,laden,under mast	m1(mm)	120	120	
4.32		Ground clearance,centre of wheelbase	m2(mm)	170	170	
4.34.1		Aisle width for pallets 1000×1200 crossways	Ast(mm)	3935	3935	
4.34.2		Aisle width for pallets 800×1200 lengthways	Ast(mm)	4135	4135	
4.35		Turning radius	Wa (mm)	2270	2270	
4.36	Inside turning radius	b13(mm)	615	615		
Performance Data	5.1	Travel speed,laden/unladen	km/h	18/18	18/18	
	5.2	Lift speed,laden/unladen	Two stage gantry mm/s	580/600	580/600	
	5.3	lowering speed,laden/unladen	Two stage gantry mm/s	400/420	400/420	
	5.6	Max.Drawbar pull ,laden/unladen	mechanical drive kN	20/13	20/13	
	5.6a	Max.Drawbar pull ,laden/unladen	hydrodynamic drive kN	20/13	20/13	
	5.7	Max.Gradient performance,laden/unladen S2	mechanical drive %	20/20	20/20	
	5.7a	Max.Gradient performance,laden/unladen S2	hydrodynamic drive %	20/20	20/20	
	5.10	Service brake		Hydraulic	Hydraulic	
	Engine	7.1	Engine builder		Xinchai 4D29V41(China IV)	Xinchai 4D29V41(China IV)
		7.2	Engine power rating ISO1585	kW	36.8	36.8
7.3		Rated speed	rpm	2500	2500	
7.4		Number of cylinders/displacement	cm3	4/2850	4/2850	
7.5a		Maximum torque	N.m/rpm	165/1600-1800	165/1600-1800	
7.9		Nominal voltage	V	12	12	
7.10		Battery capacity	V/Ah	12/80	12/80	
Gearbox	8.1	Transmission type		Mechanical(Hydrodynamic)	Mechanical(Hydrodynamic)	
	8.2	Gear forward/backward		2/2 (1/1)	2/2 (1/1)	
	8.3	Shifting mode		Mechanical(Hydraulic)	Mechanical(Hydraulic)	
Other Details	10.1	Operating pressure for attachments	Mpa	18.5	18.5	
	10.2	Oil volume for attachments	L/min	60	60	
	10.4	Fuel tank volume	L	60	60	
	10.8	Traction pin specification DIN 15170		30	30	

Identification	1.1	Manufacture(abbreviation)		NOBLELIFT	NOBLELIFT	NOBLELIFT	
	1.2	Manufacturer's type designation		CPC(D)30-N1X1	CPC(D)35-N1X1	CPC(D)38-N1X1	
	1.3	Drive:electric(battery or mains),diesel,petrol gas>manual)		Diesel	Diesel	Diesel	
	1.4	Type of operation(hand,pedestrian,standing,seated,order-picker)		Seated	Seated	Seated	
	1.5	Load capacity/rated load	Q(kg)	3000	3500	3800	
	1.6	Load centre distance	c (mm)	500	500	500	
	1.8	Load distance,centre of drive axle to fork	x (mm)	480	485	485	
	1.9	wheelbase	y (mm)	1760	1760	1760	
	Weights	2.1	Service weight incl	kg	4250	4560	4760
2.2		Axle loading ,laden front/rear	kg	6450/800	7220/840	7690/870	
2.3		Axle loading,unladen front/rear	kg	1750/2500	1760/2800	1760/3000	
Wheels, Chassis	3.1	Type:solid rubber,superelastic,pneumatic,polyurethane		Pneumatic tire	Pneumatic tire	Pneumatic tire	
	3.2	Tyres size,front		28x9-15-14PR	28x9-15-14PR	28x9-15-14PR	
	3.3	Tyres size,rear		6.50-10-10PR	6.50-10-10PR	6.50-10-10PR	
	3.5	Wheels,number front/rear(×=driven wheels)		2X/2	2X/2	2X/2	
	3.6	Track width,front	b10 (mm)	1000	1000	1000	
	3.7	Track width,rear	b11 (mm)	980	980	980	
	Basic Dimensions	4.1	Mast/fork carriage tilt forward/backward	$\alpha/\beta(^{\circ})$	6/12	6/12	6/12
4.2		lowered mast height	h1(mm)	2055	2170	2170	
4.3		Free lift	h2(mm)	145	150	150	
4.4		Lift height	h3(mm)	3000	3000	3000	
4.4a		Lift height (Including cargo fork)	h23(mm)	3045	3050	3050	
4.5		Extended mast height	h4(mm)	4105	4105	4105	
4.7		Overhead load guardheight	h6(mm)	2150	2150	2150	
4.8		Seat height/standing height	h7(mm)	1050	1050	1050	
4.12		Coupling height	h10(mm)	420	420	420	
4.19		Overall length (Including cargo fork)	l1(mm)	3840	3905	3945	
4.20		Overall length	l2(mm)	2770	2835	2875	
4.21		Overall width (Frame/tires)	b1(mm)	1195/1228	1195/1228	1195/1228	
4.22		Fork dimensions	s/e/l(mm)	1070/122/45	1070/122/50	1070/122/50	
4.23		Fork mounting grade		3A	3A	3A	
4.24		Width of fork rack	b3(mm)	1100	1100	1100	
4.31		Ground clearance ,laden,under mast	m1(mm)	140	140	140	
4.32		Ground clearance,centre of wheelbase	m2(mm)	190	190	190	
4.34.1		Aisle width for pallets 1000×1200 crossways	Ast(mm)	4130	4195	4225	
4.34.2		Aisle width for pallets 800×1200 lengthways	Ast(mm)	4330	4395	4425	
4.35		Turning radius	Wa (mm)	2450	2510	2540	
4.36	Inside turning radius	b13(mm)	715	715	715		
Performance Data	5.1	Travel speed,laden/unladen	km/h	19/20	19/20	19/20	
	5.2	Lift speed,laden/unladen	Two stage gantry mm/s	460/480	380/410	380/410	
	5.3	lowering speed,laden/unladen	Two stage gantry mm/s	410/430	410/430	410/430	
	5.6	Max.Drawbar pull ,laden/unladen	mechanical drive kN	21/17	21/17	21/16	
	5.6a	Max.Drawbar pull ,laden/unladen	hydrodynamic drive kN	21/17	21/17	21/16	
	5.7	Max.Gradient performance,laden/unladen S2	mechanical drive %	20/20	20/20	20/20	
	5.7a	Max.Gradient performance,laden/unladen S2	hydrodynamic drive %	20/20	20/20	20/20	
	5.10	Service brake		Hydraulic	Hydraulic	Hydraulic	
	Engine	7.1	Engine builder		Xinchai 4D29V41(China IV)	Xinchai 4D29V41(China IV)	Xinchai 4D29V41(China IV)
		7.2	Engine power rating ISO1585	kW	36.8	36.8	36.8
7.3		Rated speed	rpm	2500	2500	2500	
7.4		Number of cylinders/displacement	cm3	4/2850	4/2850	4/2850	
7.5a		Maximum torque	N.m/rpm	165/1600-1800	165/1600-1800	165/1600-1800	
7.9		Nominal voltage	V	12	12	12	
7.10		Battery capacity	V/Ah	12/80	12/80	12/80	
Gearbox	8.1	Transmission type		Mechanical(Hydrodynamic)	Mechanical(Hydrodynamic)	Mechanical(Hydrodynamic)	
	8.2	Gear forward/backward		2/2 (1/1)	2/2 (1/1)	2/2 (1/1)	
	8.3	Shifting mode		Mechanical(Hydraulic)	Mechanical(Hydraulic)	Mechanical(Hydraulic)	
Other Details	10.1	Operating pressure for attachments	Mpa	18.5	18.5	18.5	
	10.2	Oil volume for attachments	L/min	70	70	70	
	10.4	Fuel tank volume	L	70	70	70	
	10.8	Traction pin specification DIN 15170		30	30	30	

Table of door frame parameters

Gantry type	Model	Maximum lifting height	Gantry height			Free lift height		Front overhang	Mast tilt angle	Payload capacity			
			Landing height of the gantry	Gantry protruding height		NO Load-backrest	Load-backrest			500mm Load centre distance			
				NO Load-backrest	Load-backrest					Single tire		Double tire	
			mm	mm	mm	mm	mm			mm	mm	Front/Back	2.0t
mm	2.0t/2.5t	2.0t/2.5t	2.0t/2.5t	2.0t/2.5t	2.0t/2.5t	2.0t/2.5t	(°)	kg	kg	kg	kg		
Secondary wide view gantry	A20/25/M200	2000	1615	2635	3045	140	140	465	6/12	2000	2500	2000	2500
	A20/25/M250	2500	1745	3135	3545	140	140	465	6/12	2000	2500	2000	2500
	A20/25/M270	2700	1845	3335	3745	140	140	465	6/12	2000	2500	2000	2500
	A20/25/M300	3000	1995	3635	4045	140	140	465	6/12	2000	2500	2000	2500
	A20/25/M330	3300	2145	3935	4345	140	140	465	6/12	2000	2500	2000	2500
	A20/25/M350	3500	2245	4135	4545	140	140	465	6/12	2000	2500	2000	2500
	A20/25/M360	3600	2345	4235	4645	140	140	465	6/12	2000	2500	2000	2500
	A20/25/M370	3700	2395	4335	4745	140	140	465	6/12	2000	2500	2000	2500
	A20/25/M380	3800	2445	4435	4845	140	140	465	6/12	2000	2500	2000	2500
	A20/25/M400	4000	2595	4635	5045	140	140	465	6/12	1900	2300	2000	2500
	A20/25/M430	4300	2745	4935	5345	140	140	465	6/6 * 6/12	1800	2100	1950	2450
	A20/25/M450	4500	2845	5135	5545	140	140	465	6/6 * 6/12	1700	2000	1900	2400
	A20/25/M480	4800	2995	5435	5845	140	140	465	6/6 * 6/12	1500	1700	1700	2100
	A20/25/M500	5000	3095	5635	6045	140	140	465	6/6 * 6/12	1400	1600	1600	2000
A20/25/M550	5500	3345	6135	6545	140	140	465	3/6 * 3/6	1300	1400	1500	1800	
A20/25/M600	6000	3595	6635	7045	140	140	465	3/6 * 3/6	1000	1050	1400	1600	
Two level full free lift gantry	A20/25/U250	2500	1810	3170	3545	1140	760	465	6/12	2000	2500	2000	2500
	A20/25/U270	2700	1910	3370	3745	1240	860	465	6/12	2000	2500	2000	2500
	A20/25/U300	3000	2010	3670	4045	1340	960	465	6/12	2000	2500	2000	2500
	A20/25/U330	3300	2160	3970	4345	1490	1110	465	6/12	2000	2500	2000	2500
	A20/25/U360	3600	2310	4270	4645	1640	1260	465	6/12	2000	2500	2000	2500
	A20/25/U400	4000	2560	4670	5045	1890	1510	465	6/12	1900	2300	2000	2500
Three full free lift gantry	A20/25/N400	4000	1955	4695	5055	1270	910	475	6/6	1800	2100	1950	2450
	A20/25/N430	4300	2055	4995	5355	1370	1010	475	6/6	1700	2000	1900	2400
	A20/25/N450	4500	2125	5245	5605	1440	1080	475	6/6	1600	1900	1800	2300
	A20/25/N480	4800	2225	5495	5855	1540	1180	475	6/6	1500	1700	1700	2100
	A20/25/N500	5000	2290	5695	6055	1605	1245	475	6/6	1400	1600	1600	2000
	A20/25/N550	5500	2455	6195	6555	1770	1410	475	3/6	1050	1200	1500	1800
	A20/25/N600	6000	2675	6705	7055	1990	1630	475	3/6	700	800	1400	1600
	A20/25/N650	6500	2850	7195	7555	2165	1805	475	3/6	\	\	1300	1450
A20/25/N700	7000	3055	7725	8055	2340	2010	475	3/6	\	\	1200	1300	

100kg less with integral side shifter, 150kg less with external side shifter.

* Optional tilt Angle for dual wheels.

2-2.5t models can choose three levels 7.5 meters, 8 meters door frame.

Table of door frame parameters

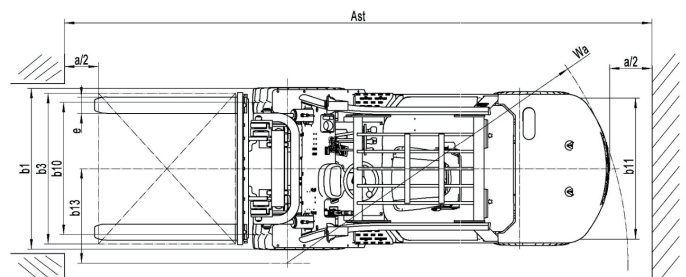
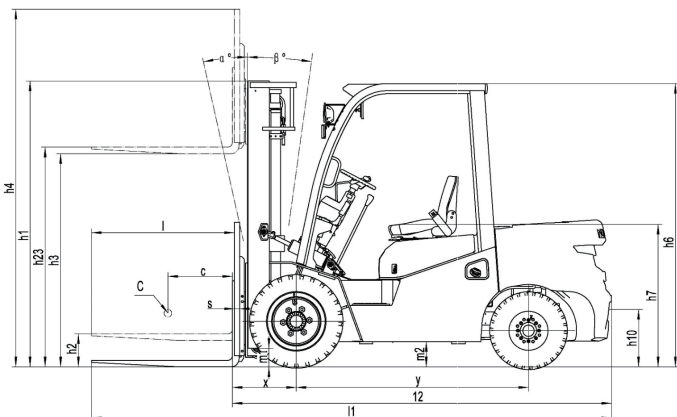
Gantry type	Model	Maximum lifting height mm	Gantry height						Free lift height				Front overhang		Mast tilt angle Front/Back (°)	Payload capacity					
			Landing height of the gantry		Gantry protruding height				NO Load-backrest		Load-backrest					500mm Load centre distance					
			mm		NO Load-backrest		Load-backrest		mm		mm		mm			Single tire			Double tire		
			3.0t	3.5t/3.8t	3.0t	3.5t/3.8t	3.0t	3.5t/3.8t	3.0t	3.5t/3.8t	3.0t	3.5t/3.8t	3.0t	3.5t/3.8t	3.0t	3.5t	3.8t	3.0t	3.5t	3.8t	
Secondary wide view gantry	A30/35/M200	2000	1555	1670	2670	2790	3105	3105	145	150	145	150	480	485	6/12	3000	3500	3800	3000	3500	3800
	A30/35/M250	2500	1805	1920	3170	3290	3605	3605	145	150	145	150	480	485	6/12	3000	3500	3800	3000	3500	3800
	A30/35/M270	2700	1905	2020	3370	3490	3805	3805	145	150	145	150	480	485	6/12	3000	3500	3800	3000	3500	3800
	A30/35/M300	3000	2055	2170	3670	3790	4105	4105	145	150	145	150	480	485	6/12	3000	3500	3800	3000	3500	3800
	A30/35/M330	3300	2205	2320	3970	4090	4405	4405	145	150	145	150	480	485	6/12	3000	3500	3800	3000	3500	3800
	A30/35/M350	3500	2305	2420	4170	4290	4605	4605	145	150	145	150	480	485	6/12	3000	3500	3800	3000	3500	3800
	A30/35/M360	3600	2405	2470	4270	4390	4705	4705	145	150	145	150	480	485	6/12	3000	3500	3800	3000	3500	3800
	A30/35/M370	3700	2455	2520	4370	4490	4805	4805	145	150	145	150	480	485	6/12	3000	3500	3800	3000	3500	3800
	A30/35/M380	3800	2505	2570	4470	4590	4905	4905	145	150	145	150	480	485	6/12	3000	3500	3800	3000	3500	3800
	A30/35/M400	4000	2655	2720	4670	4790	5105	5105	145	150	145	150	480	485	6/12	3000	3500	3800	3000	3500	3800
	A30/35/M430	4300	2805	2870	4970	5090	5405	5405	145	150	145	150	480	485	6/6 * 6/12	2900	3250	3650	3000	3400	3800
	A30/35/M450	4500	2905	2970	5170	5290	5605	5605	145	150	145	150	480	485	6/6 * 6/12	2850	3100	3350	3000	3350	3700
	A30/35/M480	4800	3055	3120	5470	5590	5905	5905	145	150	145	150	480	485	6/6 * 6/12	2700	2900	3100	2900	3050	3450
	A30/35/M500	5000	3155	3220	5670	5790	6105	6105	145	150	145	150	480	485	6/6 * 6/12	2550	2800	2850	2850	2850	3200
	A30/35/M550	5500	3405	3470	6170	6290	6605	6605	145	150	145	150	480	485	3/6 * 3/6	2250	2350	2650	2650	2700	3000
A30/35/M600	6000	3655	3720	6670	6790	7105	7105	145	150	145	150	480	485	3/6 * 3/6	1550	1750	2200	2200	2400	2800	
Two level full free lift gantry	A30/35/U250	2500	1880	1990	3260	3355	3620	3620	1120	1140	735	845	480	485	6/12	3000	3500	3800	3000	3500	3800
	A30/35/U270	2700	1980	2090	3460	3555	3820	3820	1220	1240	835	945	480	485	6/12	3000	3500	3800	3000	3500	3800
	A30/35/U300	3000	2090	2190	3770	3845	4120	4120	1330	1340	945	1045	480	485	6/12	3000	3500	3800	3000	3500	3800
	A30/35/U330	3300	2240	2390	4070	4155	4420	4420	1480	1540	1095	1245	480	485	6/12	3000	3500	3800	3000	3500	3800
	A30/35/U360	3600	2390	2550	4370	4455	4720	4720	1630	1700	1245	1405	480	485	6/12	3000	3500	3700	3000	3500	3700
	A30/35/U400	4000	2590	2750	4770	4855	5120	5120	1830	1900	1445	1605	480	485	6/12	2850	3250	3550	3000	3500	3700
Three full free lift gantry	A30/35/N400	4000	2005	2105	4780	4855	5120	5120	1235	1260	860	960	490	505	6/6	2700	3000	3200	2900	3400	3600
	A30/35/N430	4300	2105	2205	5080	5155	5420	5420	1335	1360	960	1060	490	505	6/6	2550	2850	3200	2850	3350	3600
	A30/35/N450	4500	2175	2175	5335	5355	5670	5670	1405	1430	1030	1130	490	505	6/6	2400	2700	3100	2700	3200	3550
	A30/35/N480	4800	2275	2375	5580	5655	5920	5920	1505	1530	1130	1230	490	505	6/6	2250	2450	2800	2550	2950	3150
	A30/35/N500	5000	2340	2440	5780	5855	6120	6120	1570	1595	1195	1295	490	505	6/6	2100	2300	2600	2400	2800	3100
	A30/35/N550	5500	2505	2605	6280	6355	6620	6620	1735	1760	1360	1460	490	505	3/6	1650	1800	2050	2250	2550	2800
	A30/35/N600	6000	2725	2770	6780	6855	7120	7120	1955	1925	1580	1625	490	505	3/6	1200	1300	1550	2100	2300	2550
	A30/35/N650	6500	2900	3000	7280	7355	7615	7615	2130	2155	1755	1850	490	505	3/6	\	\	\	1950	2050	2300
A30/35/N700	7000	3105	3170	7780	7855	8115	8115	2335	2325	1960	2125	490	505	3/6	\	\	\	1800	1850	2050	

100kg less with integral side shifter, 200kg less with external side shifter.

* Optional tilt Angle for dual wheels.

3-3.8t models can choose three levels 7.5 meters, 8 meters door frame.

Structure diagram



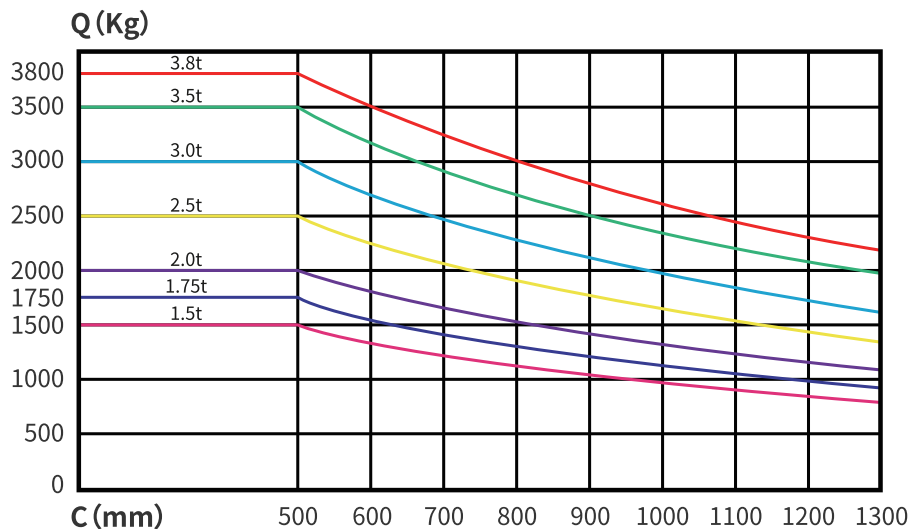
Standard configuration

- Load backrest
- Full vehicle LED lighting
- Single air filter
- Two-spool multi-way valve
- 2-stage 3m Mast
- Cup holder
- Pneumatic Tires
- Overhead guard
- 1.07-meter hook-mounted forks
- Pin code Panel
- Mid-position Exhaust
- Rain cover
- Fork descent cushioning
- Rearview mirror
- High-Position Intake
- Onboard tool kit

optional configuration

- tilt cylinder cover
- solid tires
- non-marking tire
- counterweight guard
- lowered overhead guard
- electro-hydraulic directional control
- full suspension seat
- radiator grille
- Fire extinguisher
- Rear handrail with horn
- Electric fan
- Cabin heater
- cabin ac+heater
- Front windshield
- Three, four, five-spool hydraulic control valve
- High-speed transmission
- Master switch
- User-defined color
- Warning light
- Rear working light
- Welded roof
- Front dual wheels
- cabin
- high-mounted exhaust
- exhaust fire prevention device
- Double air filter
- semi-enclosed seat
- Oil bath air filter

Load curve diagram



NOBLELIFT CHINA

Add:528 Changzhou Road, Taihu Sub-district,
 Changxing, Zhejiang 313100 China
 Tel:86-572-6210817 6210311
 Fax:86-572-6210777 6128612
 Email: info@noblelift.com
 Http: www.noblelift.com www.noblelift.cn



Official website



Our Wechat